



BREEDING STRATEGIES

ROBERT GANE - CANCHONES

AUGUST 2017

Breeding Strategies

Setting your breeding goals

Determining strengths and weaknesses of the dam

Clarifying sire selection criteria

Progeny testing

Evaluation pre potent characteristics of both males & females

Hidden treasures - Disappointments

Line breeding options - Wright Co-Efficient of Inbreeding

The role of the show ring in your breeding program

Mating and Health Issues

Definition / Terms

- * Phenotype
- * Genotype
- * Line Breeding



Breeding Goals

- * Your passion
- * Fleece characteristics
- * Frame / body
- * Marketing plan
- * Size of herd
- * Document
- * Agree



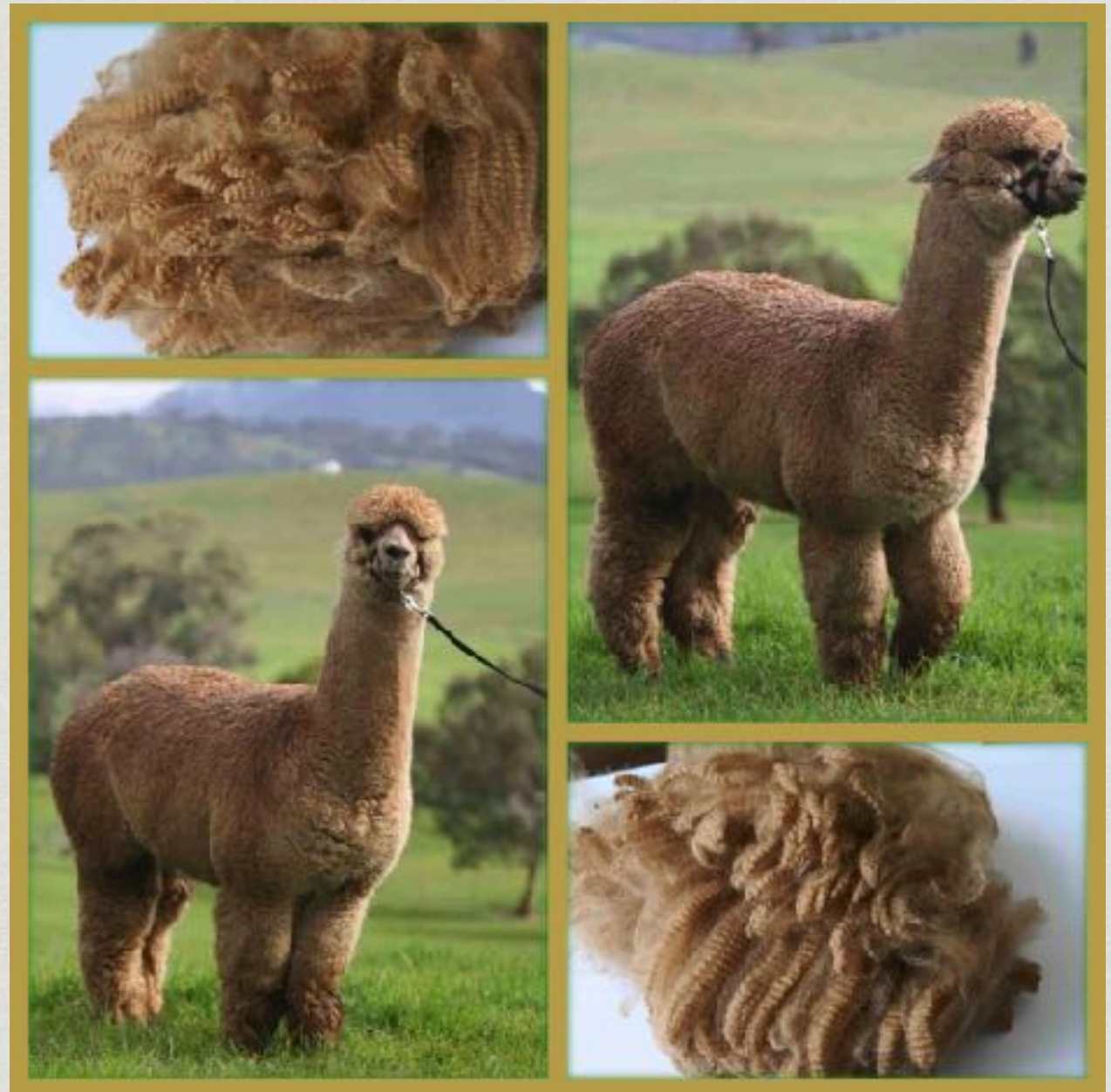
Evaluation of the dam

- * Pedigree - genotype
- * Progeny
- * Fibre data
- * Growth rate
- * Fertility
- * Gestation predictability
- * Mothering ability
- * Show Results ?



Sire Selection Criteria

- * Pedigree
- * Progeny
- * Fibre / Frame
- * Show results
- * Amplify dam's strengths
- * Correct dam's weaknesses
- * Registry Database analysis



Progeny Testing

- * Review your progeny
- * Review others progeny
- * Sires progeny class
- * Phenotype / Genotype



Evaluation of mating

- * Dam strength / weakness
- * Sire strength / weakness
- * Progeny characteristics
- * Pre potent characteristics
- * Form



ALPACA EVALUATION

Name of Animal:_____DOB: _____ Tag :_____

Sire:_____Dam:_____

Date of Inspection:_____

HEAD

	YES	NO
Neatly formed face/muzzle		
Normal ears		
Normal eyes		
Normal jaw		
Normal teeth		
Comments:		

BODY

	YES	NO
Strong boned solid frame		
Normal length neck		
Straight tail covering genitalia		
Normal height		
Normal weight		
Good body score		
Firm upright pasterns		
Well formed feet/2 toes		
Good movement/even stride		
Good breadth (chest/rear)		
Strong straight back		
Strong straight legs		
Comments:		

REPRODUCTIVE

	YES	NO
Normal udder		
Normal teats (4)		
Normal testicles		
Comments:		

FLEECE (on a scale of 1-5) (1= lowest)

	1	2	3	4	5
Density					
Fineness					
Handle					
Guard hair					
Head coverage					
Leg coverage					
Staple formation					
Staple length					
Uniformity of colour					
Uniformity of length					
Uniformity of micron					
Lack of Tipping					
Crimp frequency					
Crimp amplitude					
Brightness / Lustre					

FIBRE TEST

	Results
Micron	
Standard Deviation	
CV	
Spinning Fineness	
Comfort Factor	
Curvature	

MISCELLANEOUS COMMENTS:

Temperament:

Breeding Performance - Pre potent characterists

Sire	Strengths	Weaknesses
Dam		
Progeny		
Sire	Strengths	Weaknesses
Dam		
Progeny		



SIRE



DAM

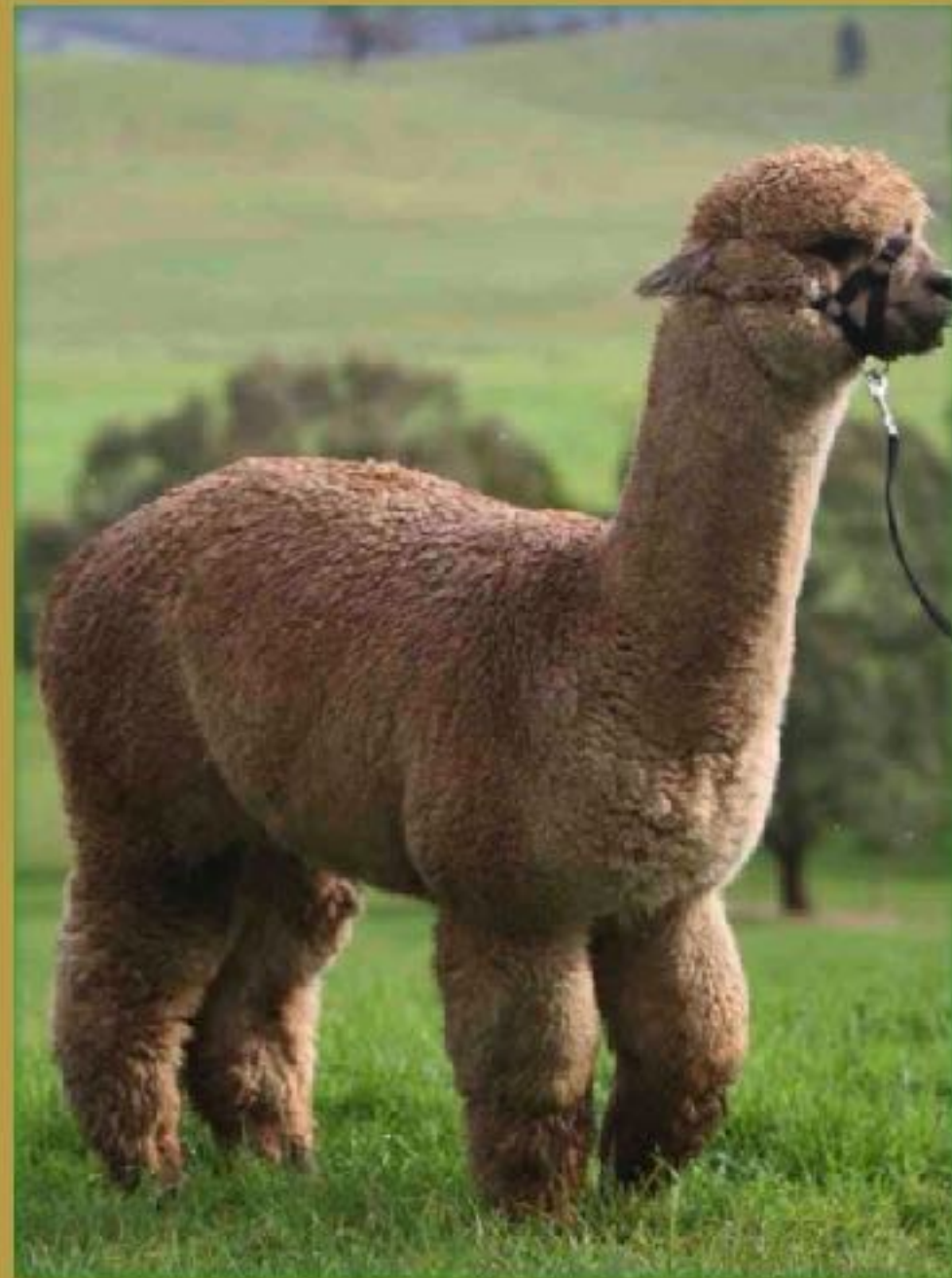


PROGENY

Breeding Performance - Pre potent characterists

Sire	Strengths	Weaknesses
Rising Sun	Fines , Dense	Not black
	Substance of bone, excellent conformation	Some primary fibres
	Long staple length	
	Huge cutting fleece	
	Great temperament	
Dam		
Zeste	Excellent true black	Could be finer
	Very sound confirmation	Want longer staple length
	High follicular density	Want to cut more
	No white fibres	
Progeny	Very fine	Some primary fibres
	Dense	
	Black	
	Excellent bone and conformation	
	No white or light fibres	





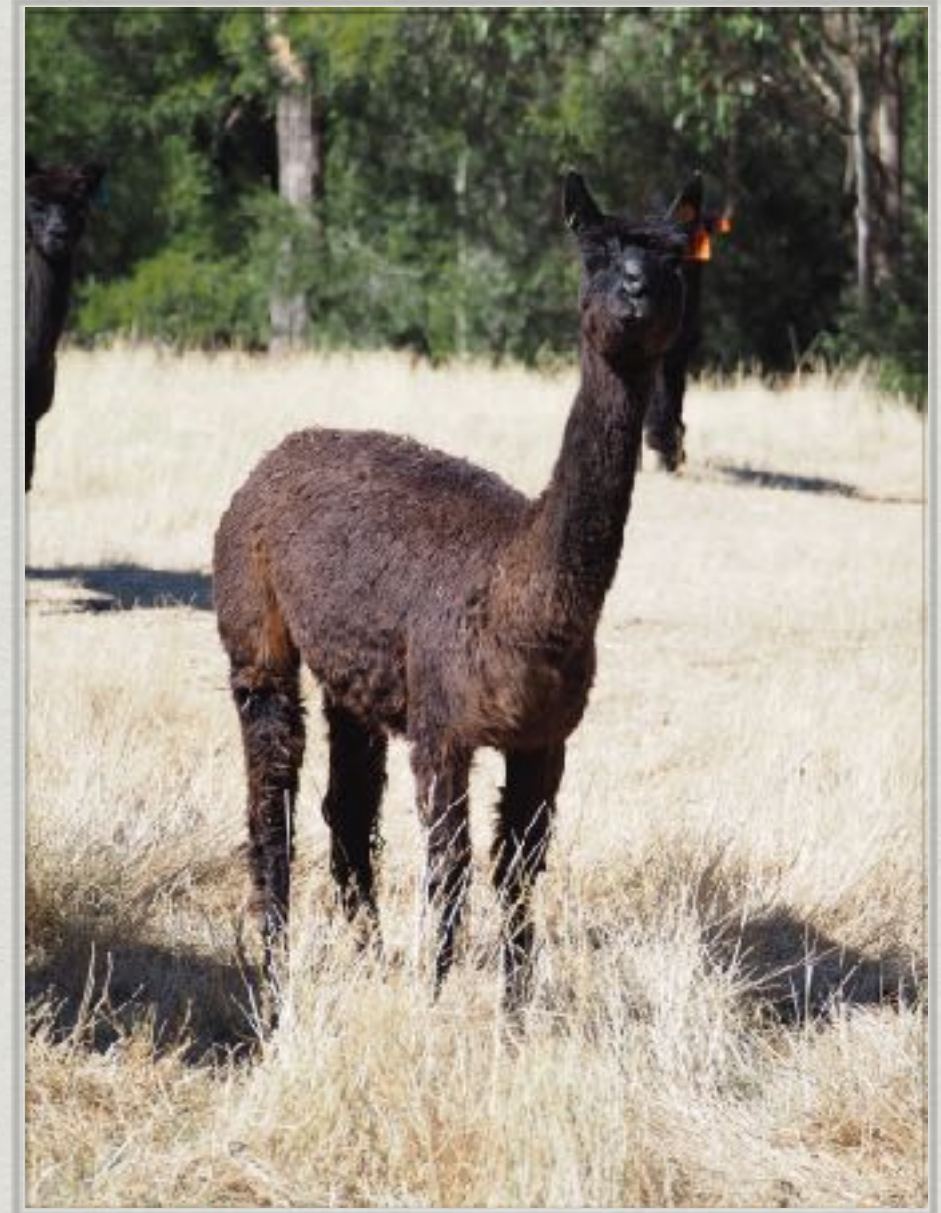




Sire	Strengths	Weaknesses
Rising Sun	Fine	Some primary fibres
	Dense	
	Long staple length	
	Hugh cutting fleece	
	Great temperament	
Dam		
Seventh Heaven	Fine, Dense	Some primary fibres in chest
	Even colour	Not suitable for MOET
	Excellent bone and conformation	Not big
Progeny	Fine	Some primary fibres in chest
	Dense	
	Long staple length	
	Excellent colour	
	Variable colour	
Sire	Strengths	Weaknesses

Hidden Treasures

- * Mismatch phenotype / genotype





CANCHONES DALIMANIA



CANCHONES DIESEL PLUS



CANCHONES DEBONAIR



CANCHONES TSUNAMI



CANCHONES DRAMATIC



CANCHONES DRAMA

Canchones

fine black alpaca

Canchones

Shearing Data by Animal

Year No.	Shearing Date	Fibre Weight (Kgs)				Sample Details					
		Grade 1	Grade 2	Grade 3	Total	SFW	Mean	SD	CV	SF	CF
Ear Tag: P062	Animal Name: Canchones Normandie - (S)TB										
2006	1-Dec-2006						27.40	5.50	20.00%	26.44	73.9%
2007	1-Dec-2007						27.60	4.90	17.60%	26.13	75.1%
2008	1-Oct-2008						27.60	5.10	18.50%	26.31	76.5%
	20-Mar-2009						26.50	4.80	18.00%	25.17	83.1%
2009	1-Oct-2009						28.60	5.70	20.10%	27.62	69.3%
	2-Oct-2009						27.60	5.00	18.30%	26.27	77.1%
2010	1-Oct-2010						27.40	5.10	18.70%	26.16	75.1%
2011	4-Oct-2011						27.30	4.90	18.00%	25.93	76.3%
2012	5-Oct-2012						27.70	4.90	17.60%	26.23	75.4%
2013	1-Oct-2013						27.60	5.40	19.40%	26.5	73.9%
2014	22-Sep-2014						28.30	5.60	19.70%	27.24	71.1%
Average:							27.60	5.17	18.72%	26.36	75.2%
Overall	Average:						27.60	5.17	18.72%	26.36	75.2%

Canchones

fine black alpaca

Canchones

Shearing Data by Animal

Year No.	Shearing Date	Fibre Weight (Kgs)				Sample Details					
		Grade 1	Grade 2	Grade 3	Total	SFW	Mean	SD	CV	SF	CF
Ear Tag: P136		Animal Name: Canchones Navigateur - (S)TB									
2008	1-Oct-2008						17.80	3.80	21.50%	17.4	99.7%
	20-Mar-2009						15.40	3.70	23.90%	15.38	100.0%
2009	1-Oct-2009						18.70	3.20	17.00%	17.62	99.3%
	2-Oct-2009						18.40	3.20	17.30%	17.38	99.5%
2010	1-Oct-2010						17.90	3.10	17.60%	16.95	99.8%
2011	15-Sep-2011						17.90	3.30	18.60%	17.08	99.6%
2012	5-Oct-2012						18.30	3.10	17.10%	17.26	99.5%
2013	1-Oct-2013						18.90	3.70	19.60%	18.18	98.8%
Average:							17.91	3.39	19.08%	17.16	99.5%
Overall		Average:					17.91	3.39	19.08%	17.16	99.5%

Canchones

fine black alpaca

Canchones

Shearing Data by Animal

Year No.	Shearing Date	Fibre Weight (Kgs)				Sample Details					
		Grade 1	Grade 2	Grade 3	Total	SFW	Mean	SD	CV	SF	CF
<div>Ear Tag: 123945Animal Name: Canchones Naomi - (S)MF</div>											
2007	1-Dec-2007						19.10	3.70	19.60%	18.37	99.3%
2008	1-Oct-2008						18.20	3.20	17.60%	17.23	99.7%
2009	1-Oct-2009						19.70	4.00	20.00%	19.01	98.3%
	2-Oct-2009						19.00	3.60	18.90%	18.17	99.2%
Average:							19.00	3.63	19.03%	18.20	99.1%
Overall	Average:						19.00	3.63	19.03%	18.20	99.1%

Disappointments

- * Mismatch phenotype / genotype









Role of the show ring

- * One judge's opinion
- * 3 minutes
- * Good bench mark
- * Sires progeny
- * Pen hopping



Line Breeding

- * Livestock standard
- * Wright coefficient
- * Registry Data Base
- * Strengths & weaknesses
- * Genetic suppression
- * Outcross for vigour
- * Examples



Health & Mating Issues

- * Age / weight
- * Supplements
- * Duration of matings
- * Fertility measures
- * Testicle size
- * Problems - females
- * Problems - males





QUESTIONS